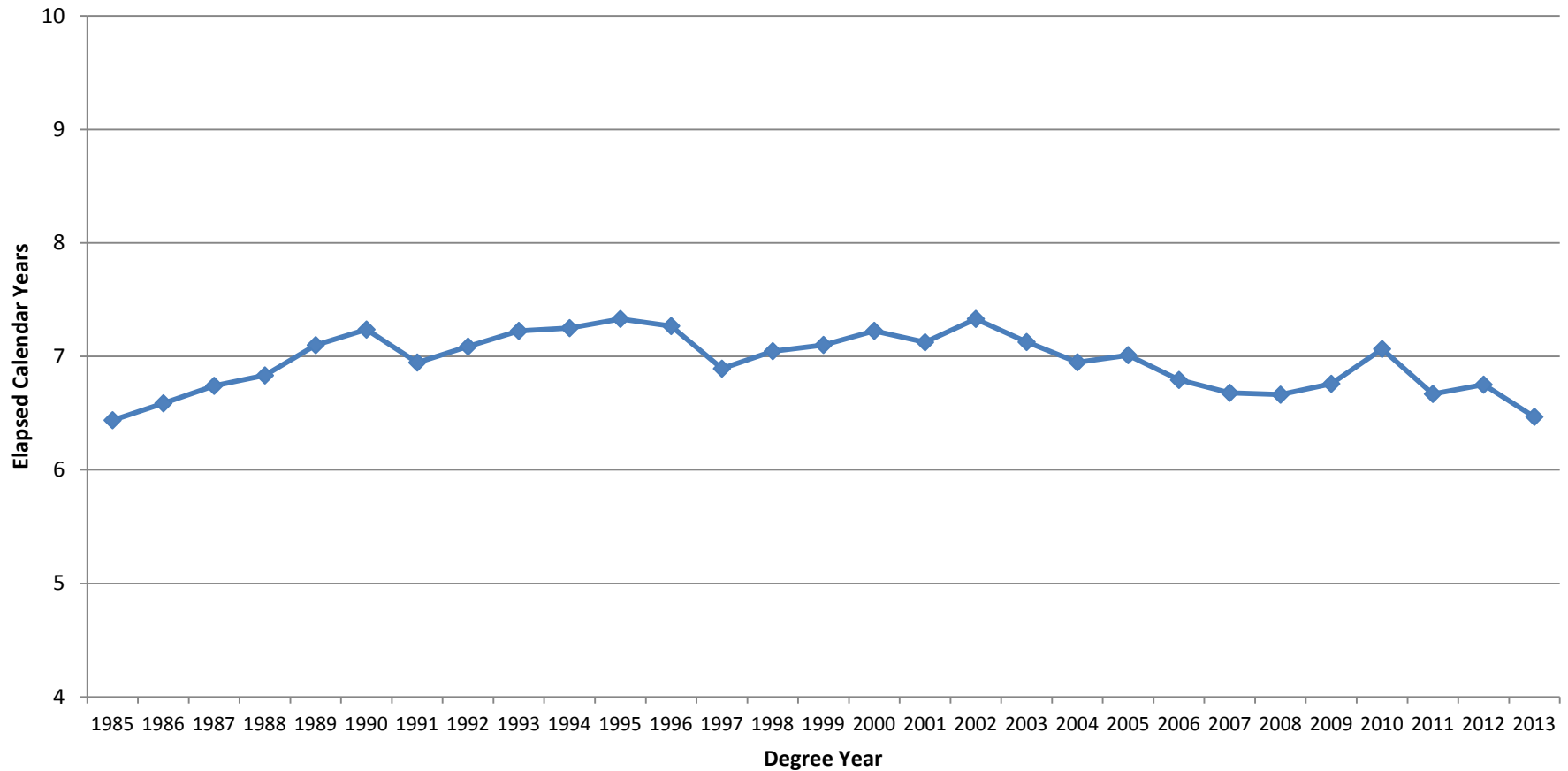


UW-Madison PhD Time-to-Degree (Elapsed Calendar Years) by Disciplinary Division

Overall Average PhD Time-to-Degree

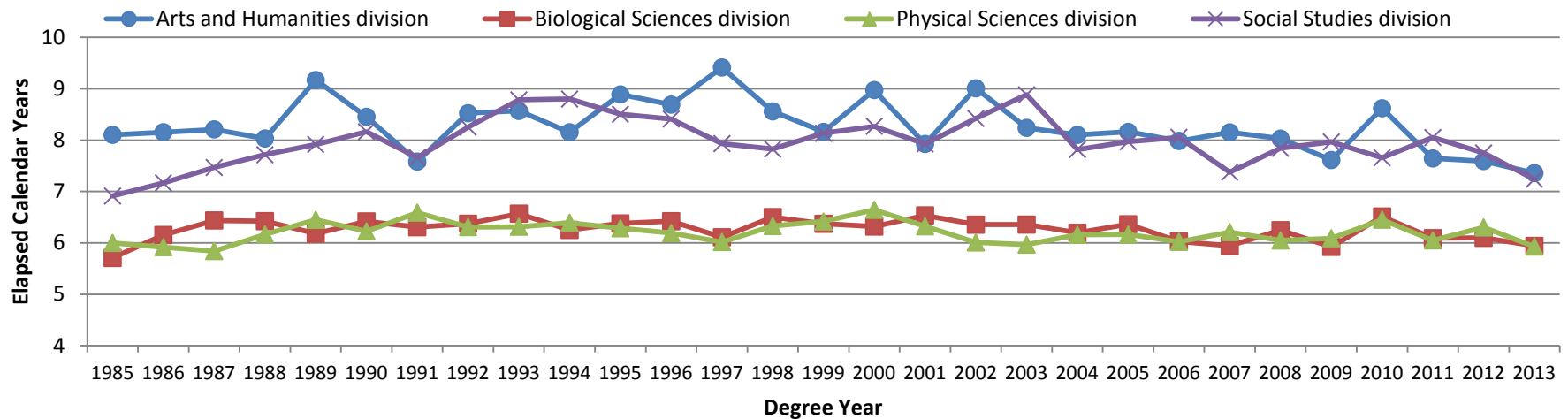


Minimum, Maximum, and Average Time-to-Degree (TTD), 1985-2013

	1985-1989	1990-1994	1995-1999	2000-2004	2005-2009	2010-2013
Overall Minimum TTD	1.3	1.3	1.0	1.3	1.4	1.3
Average TTD	6.7	7.2	7.1	7.2	6.8	6.7
Maximum TTD	28.0	33.7	35.4	35.3	37.4	41.3
Average Annual Awards	663	713	748	663	723	759

UW-Madison PhD Time-to-Degree (Elapsed Calendar Years) by Disciplinary Division

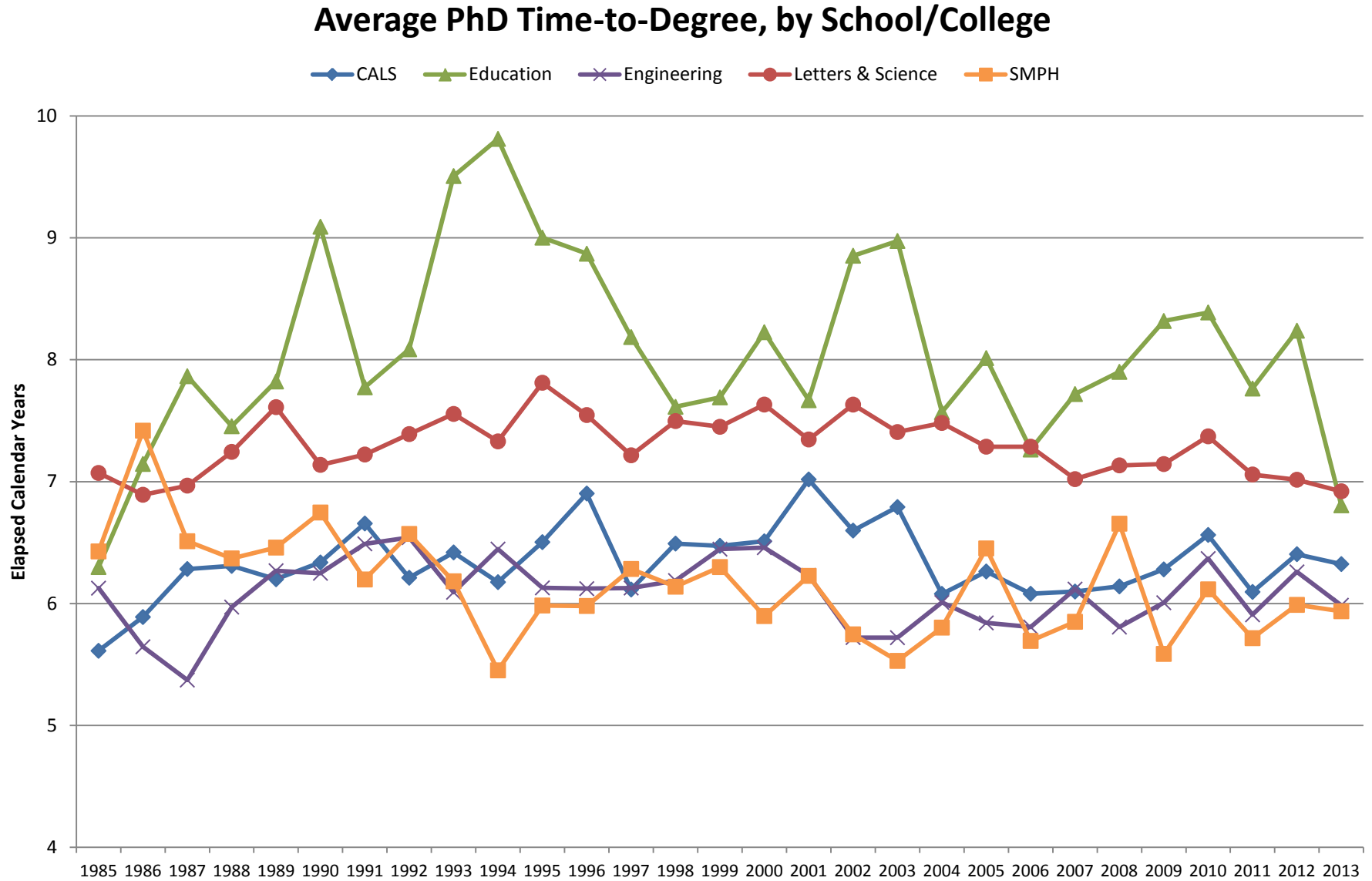
Average PhD Time-to-Degree, by Disciplinary Division



Minimum, Maximum, and Average Time-to-Degree (TTD) by Disciplinary Division, 1985-2013

	1985-1989	1990-1994	1995-1999	2000-2004	2005-2009	2010-2013
Arts and Humanities						
Minimum TTD	2.3	2.7	2.7	2.7	2.3	1.3
Average TTD	8.4	8.1	8.6	8.5	8.3	7.9
Maximum TTD	23.0	33.7	27.0	35.3	32.4	26.7
Average Annual Awards	61	76	79	88	82	96
Biological Sciences						
Minimum TTD	1.6	1.3	1.0	1.3	1.4	2.0
Average TTD	6.1	6.3	6.3	6.3	6.1	6.1
Maximum TTD	28.0	22.0	26.8	25.8	37.0	29.3
Average Annual Awards	143	165	179	169	200	208
Physical Sciences						
Minimum TTD	1.7	2.0	2.0	1.7	2.0	1.7
Average TTD	6.1	6.3	6.3	6.1	6.0	6.1
Maximum TTD	19.4	21.4	23.1	18.7	37.4	41.3
Average Annual Awards	215	232	238	190	238	244
Social Studies						
Minimum TTD	1.3	2.0	1.7	1.7	1.7	2.0
Average TTD	7.3	8.3	8.1	8.2	7.8	7.7
Maximum TTD	22.0	31.9	35.4	33.8	31.0	39.1
Average Annual Awards	241	238	251	214	202	168

UW-Madison PhD Time-to-Degree (Elapsed Calendar Years) by School/College



Note: Business, SoHE, Nelson Institute, Nursing, and Vet Med are excluded from this chart due to small numbers of PhD degrees. See the following table for information on time-to-degree trends for data.

Minimum, Maximum, and Average Time-to-Degree (TTD) by School/College, 1985-2013

		1985-1989	1990-1994	1995-1999	2000-2004	2005-2009	2010-2013
CALs	Minimum TTD	2.0	2.0	2.7	1.3	2.7	2.3
	Average TTD	6.0	6.4	6.5	6.6	6.2	6.4
	Maximum TTD	17.8	22.0	26.8	25.8	37.0	25.0
	Average Annual Awards	116	128	133	102	116	111
Business	Minimum TTD	3.7	3.0	3.0	3.7	2.7	3.7
	Average TTD	7.0	7.3	7.2	7.0	6.5	6.4
	Maximum TTD	18.8	17.6	25.2	21.0	13.7	20.7
	Average Annual Awards	16	14	12	10	12	9
Education	Minimum TTD	1.3	2.3	1.7	1.7	2.0	2.0
	Average TTD	7.3	8.9	8.3	8.3	7.9	7.8
	Maximum TTD	20.0	31.9	35.4	33.8	31.0	37.0
	Average Annual Awards	96	94	91	81	75	82
Engineering	Minimum TTD	1.7	2.7	2.0	2.3	2.0	1.7
	Average TTD	5.9	6.4	6.1	6.0	5.9	6.1
	Maximum TTD	17.3	17.7	22.4	18.3	24.0	41.3
	Average Annual Awards	93	99	108	95	110	114
SoHE	Minimum TTD	3.3	2.7	2.4	2.7	3.7	2.7
	Average TTD	7.1	7.6	7.2	8.8	8.4	8.3
	Maximum TTD	19.0	27.2	26.6	28.4	15.0	27.0
	Average Annual Awards	7	6	9	7	5	6
Nelson Institute	Minimum TTD	3.0	3.0	2.4	2.0	3.0	2.3
	Average TTD	7.4	8.1	7.7	8.5	8.4	7.1
	Maximum TTD	17.3	20.6	23.4	22.0	17.4	39.1
	Average Annual Awards	7	7	9	8	5	8
Letters & Science	Minimum TTD	2.3	2.0	2.7	1.7	1.7	1.3
	Average TTD	7.2	7.3	7.5	7.5	7.2	7.1
	Maximum TTD	28.0	33.7	28.6	35.3	37.4	39.1
	Average Annual Awards	294	323	341	309	329	344
Nursing	Minimum TTD	6.3	5.0	3.7	4.0	3.7	3.3
	Average TTD	9.2	6.3	6.8	6.3	7.0	8.5
	Maximum TTD	11.3	8.0	12.3	15.4	29.8	29.3
	Average Annual Awards	1.0	1.0	4.0	5.0	6.0	5.0
Pharmacy	Minimum TTD	4.0	4.0	2.7	3.3	1.4	3.3
	Average TTD	6.0	5.8	5.6	6.7	5.5	5.3
	Maximum TTD	11.7	12.7	9.7	17.0	19.0	8.3
	Average Annual Awards	11	10	7	7	10	11
SMPH	Minimum TTD	1.6	1.3	1.0	1.3	2.0	2.7
	Average TTD	6.6	6.3	6.1	5.8	6.1	5.9
	Maximum TTD	19.8	16.0	15.7	14.3	25.7	19.7
	Average Annual Awards	22	30	33	34	49	64
Vet Med	Minimum TTD			5.27	3.74	3.25	1.99
	Average TTD			7.5	6.6	5.8	5.7
	Maximum TTD			13.7	19.4	9.6	12.7
	Average Annual Awards			1	6	6	6

Average PhD Time to Degree by Major, 1985-2013

Plan Group	Major	1985-1989	1990-1994	1995-1999	2000-2004	2005-2009	2010-2013
018	African Languages and Literature	8.0	9.0	11.2	7.6	9.0	8.4
021	Agricultural and Applied Economics	6.8	5.9	6.2	7.4	6.3	6.8
054	Agronomy	5.1	5.5	5.1	4.8	5.5	6.5
065	Animal Sciences	5.7	6.5	6.3	7.0	6.2	6.0
067	Anthropology	9.9	9.0	10.2	10.3	11.3	9.2
090	Art History	8.5	9.4	8.1	8.1	11.5	10.3
094	Astronomy	5.5	6.2	5.3	5.6	5.9	6.1
675	Atmospheric and Oceanic Sciences	6.9	7.3	7.3	7.0	8.0	6.6
103	Biochemistry	5.9	6.1	5.8	6.0	6.0	5.7
038	Biological Systems Engineering	6.2	5.3	6.7	4.8	4.8	5.2
115	Biomedical Engineering				3.9	5.4	6.1
117	Biophysics	9.2	4.5	5.3	5.2	6.0	4.6
121	Botany	6.0	6.1	6.0	6.7	6.1	5.4
133	Business	7.0	7.3	7.2	7.0	6.5	6.4
236	Cancer Biology	6.3	6.2	6.1	5.3	6.0	6.3
147	Cellular and Molecular Biology			6.5	6.5	6.2	5.9
149	Cellular and Molecular Pathology	5.9	7.8	5.9	7.6	5.9	5.5
148	Chemical Engineering	5.6	5.9	5.7	5.8	5.6	5.5
153	Chemistry	5.9	5.7	5.8	5.6	5.5	5.5
171	Chinese	9.5	6.5	7.2	9.8	8.6	8.9
175	Civil and Environmental Engineering	6.6	6.8	6.1	5.7	5.8	6.6
189	Classics	7.0	6.2	6.3	7.7	7.3	6.6
204	Clinical Investigation						1.1
201	Communication Arts	7.9	7.6	7.7	8.3	8.1	7.9
216	Communication Sciences and Disorders	6.6	6.9	7.2	5.3	5.9	6.3
221	Comparative Biomedical Sciences	5.3	6.0	7.1	6.6	5.8	5.6
225	Comparative Literature	9.2	10.8	9.2	13.9	12.4	8.1
229	Computer Sciences	6.2	6.3	6.4	6.9	6.6	7.0
237	Counseling Psychology	6.1	10.5	9.2	9.5	8.4	8.4
242	Curriculum and Instruction	7.6	8.7	7.9	7.9	7.1	8.0
247	Dairy Science	4.7	5.5	5.8	5.8	5.6	5.9
250	Development	7.4	8.9	7.6	8.6	6.9	6.4
261	Economics	6.5	6.5	6.2	5.6	5.6	6.0
273	Educational Leadership and Policy Analysis	8.0	9.2	9.0	8.1	9.1	8.9
279	Educational Policy Studies	7.4	12.4	7.9	8.8	7.7	8.4
283	Educational Psychology	8.0	7.7	8.2	8.7	7.2	6.3
382	Electrical Engineering	5.8	6.3	6.6	6.2	6.2	6.6
391	Endocrinology - Reproductive Physiology	8.2	5.5	5.3	6.3	7.0	6.9
400	Engineering Mechanics	5.7	6.2	7.9	5.6	6.5	7.4
405	English	9.0	7.6	9.7	9.1	8.6	8.2
409	Entomology	5.9	6.4	7.0	7.4	7.6	7.9
593	Environment and Resources	7.6	8.3	7.6	8.6	8.2	6.8
411	Environmental Chemistry and Technology	7.9	7.1	6.8	7.0	5.3	5.4
421	Epidemiology						4.7
436	Food Science	6.2	6.6	7.1	7.4	5.6	5.8
441	Forestry	6.2	5.4	5.6	6.2	6.6	7.1
445	French	8.4	8.6	8.4	8.5	8.6	9.0
617	Freshwater and Marine Sciences	5.9	7.0	10.1	6.1	4.6	6.6
459	Genetics	7.1	7.6	6.4	6.4	5.9	6.2
463	Geography	9.0	8.5	7.9	9.0	7.5	7.5
465	Geological Engineering	6.3	10.7	8.3	6.4	4.6	5.3
468	Geoscience	6.1	6.8	6.9	6.3	7.0	6.3
477	German	8.6	8.1	8.2	7.5	8.6	8.4
497	Hebrew and Semitic Studies	11.0	7.4	11.0	9.2	9.4	10.3

Plan Group	Major	1985-1989	1990-1994	1995-1999	2000-2004	2005-2009	2010-2013
499	History	9.2	10.7	10.2	9.0	9.2	9.1
517	History of Science, Medicine and Technology	9.4	9.1	10.2	9.2	10.6	8.1
531	Horticulture	5.5	6.1	6.3	6.7	8.0	6.1
549	Human Ecology	7.0	6.6	6.1	8.6	8.3	8.3
564	Industrial Engineering	5.7	6.2	6.1	6.8	6.5	6.3
580	Italian	8.5	7.9	8.1	7.1	8.7	6.7
583	Japanese		4.6	6.0	6.0	10.2	11.2
768	Kinesiology	6.0	7.6	9.0	6.7	6.4	5.7
596	Languages and Cultures of Asia	8.7	9.2	8.1	6.7	8.4	10.5
612	Library and Information Studies	8.5	9.7	8.1	11.1	9.7	7.1
621	Linguistics	6.4	6.3	9.3	8.6	11.6	7.7
630	Mass Communications	6.5	6.3	7.0	7.2	6.8	6.9
670	Materials Engineering	4.9	6.2	6.3	6.5	5.6	5.8
632	Materials Science	6.8	6.1	6.4	6.5	5.8	5.9
634	Mathematics	6.6	7.1	6.8	6.6	6.1	6.1
643	Mechanical Engineering	5.6	6.2	5.4	5.8	5.9	5.9
655	Medical Physics	5.3	6.6	5.9	6.0	5.7	5.6
677	Microbiology	6.6	6.7	6.4	6.2	6.3	6.7
682	Molecular & Environmental Toxicology	5.8	6.0	6.7	6.1	6.0	5.2
749	Molecular and Cellular Pharmacology	6.4	8.6	6.6	5.5	5.7	5.3
687	Music	7.4	6.7	7.7	9.8	11.8	9.3
688	Music: Performance	6.8	7.0	9.4	6.6	5.2	4.1
710	Neuroscience	6.8	5.6	6.3	5.2	5.7	4.9
713	Nuclear Engineering and Engineering Physics	5.8	6.7	6.1	5.9	5.8	5.6
712	Nursing			6.6	6.3	7.0	8.5
717	Nutritional Sciences	6.7	6.7	6.4	5.9	5.9	6.8
744	Pharmaceutical Sciences	5.8	5.8	5.6	6.0	5.3	5.1
765	Philosophy	8.4	9.4	7.7	9.3	9.3	9.2
783	Physics	6.7	6.5	6.7	6.5	6.4	6.4
792	Physiology	5.8	5.9	6.2	5.4	5.3	5.4
794	Plant Breeding and Plant Genetics	4.9	5.3	5.6	5.4	5.4	5.6
796	Plant Pathology	5.5	6.3	5.6	5.8	6.1	5.9
805	Political Science	7.4	8.6	8.4	7.4	7.1	6.7
807	Population Health				4.8	7.7	6.6
810	Portuguese	13.8	13.0	12.6	7.9	7.0	6.3
832	Psychology	7.1	7.1	7.2	6.8	6.6	6.8
868	Rehabilitation Psychology	5.6	6.2	6.6	6.3	6.8	6.3
900	Scandinavian Studies	10.3	8.4	10.2	9.3	5.8	8.2
908	Second Language Acquisition					7.8	7.6
913	Slavic Languages and Literatures	8.5	9.5	7.0	9.0	10.6	10.7
912	Social and Administrative Sciences in Pharmacy	6.9	6.3	5.8	8.0	6.7	6.2
916	Social Welfare	5.9	8.8	9.0	9.1	7.7	10.3
922	Sociology	7.3	7.4	8.5	8.8	9.2	8.3
931	Soil Science	5.7	7.3	6.5	7.4	6.1	9.3
936	Spanish	8.6	8.5	8.9	9.6	9.0	9.3
101	Special Education	5.7	8.3	6.4	7.7	6.7	6.0
942	Special Graduate Committee	8.4	7.4	6.2	7.5	6.3	7.5
949	Statistics	5.6	5.9	5.5	5.6	5.8	5.7
971	Theatre and Drama	7.7	7.7	7.3	6.3	7.0	7.1
979	Urban and Regional Planning	9.3	8.3	7.1	8.0	16.0	17.7
991	Wildlife Ecology	6.9	7.2	5.8	8.1	6.6	5.5
995	Zoology	7.1	7.0	6.9	7.6	6.5	6.6
	Overall	6.7	7.2	7.1	7.2	6.8	6.7