

UW-Madison Degrees Conferred, by Disciplinary Division, 2007 to 2016

		Count of Degree-Majors, by Degree Year (Summer, Fall, Spring Terms)										10 Year	
Level	Disciplinary Division	2007	2008	2009	2010	2011	2012	2013	2014	2015	2016	Average	% Change
Bachelors													
	Arts and Humanities	1672	1773	1846	1785	1792	1662	1578	1483	1421	1280	1629	-23.4
	Biological Sciences	1331	1333	1477	1514	1495	1503	1555	1612	1769	1796	1539	34.9
	Physical Sciences	981	872	901	908	1017	1075	1120	1194	1363	1428	1086	45.6
	Social Studies	2895	3031	3206	3161	3163	3165	3156	3306	3249	3219	3155	11.2
	<i>Total Degree Recipients</i>	6181	6280	6630	6550	6631	6528	6541	6699	6902	6902		11.7
Masters													
	Arts and Humanities	256	287	259	247	234	267	235	220	205	193	240	-24.6
	Biological Sciences	310	278	328	323	320	344	311	282	305	344	315	11.0
	Physical Sciences	497	483	423	504	590	571	543	598	620	619	545	24.5
	Social Studies	860	861	784	835	958	942	1035	930	1009	1006	922	17.0
	<i>Total Degree Recipients</i>	1938	1926	1803	1917	2123	2132	2134	2044	2134	2134		10.1
Research Doctoral													
	Arts and Humanities	101	104	108	104	105	123	134	126	129	107	114	5.9
	Biological Sciences	207	221	220	205	199	224	196	208	197	226	210	9.2
	Physical Sciences	254	274	251	226	261	244	243	265	319	302	264	18.9
	Social Studies	210	160	212	182	190	223	193	214	214	213	201	1.4
	<i>Total Degree Recipients</i>	773	755	778	713	755	808	758	813	855	855		10.6

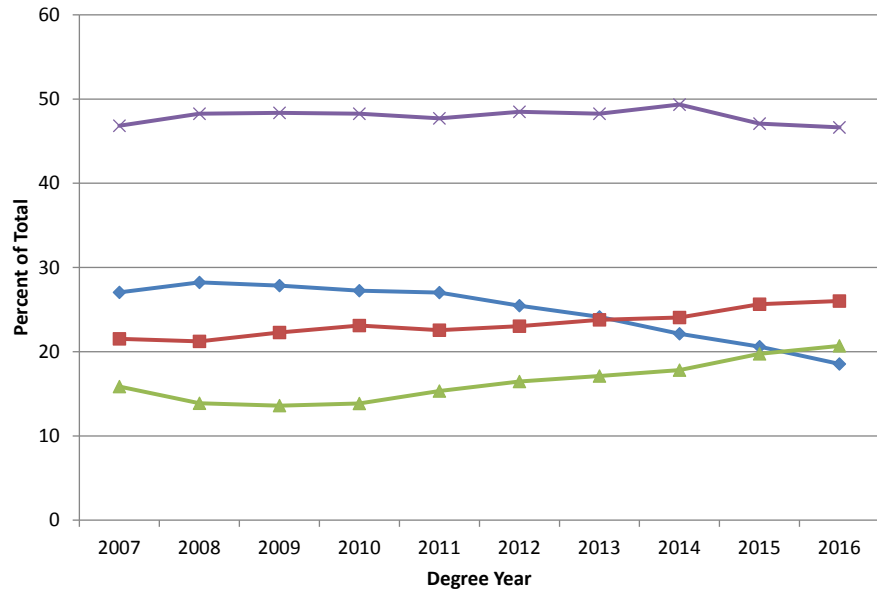
		Percent of Total, by Degree Year (Summer, Fall, Spring Terms)										10 Year	
Level	Disciplinary Division	2007	2008	2009	2010	2011	2012	2013	2014	2015	2016	Average	
Bachelors													
	Arts and Humanities	27	28	28	27	27	25	24	22	21	19	25	
	Biological Sciences	22	21	22	23	23	23	24	24	26	26	23	
	Physical Sciences	16	14	14	14	15	16	17	18	20	21	16	
	Social Studies	47	48	48	48	48	48	48	49	47	47	48	
Masters													
	Arts and Humanities	13	15	14	13	11	13	11	11	10	9	12	
	Biological Sciences	16	14	18	17	15	16	15	14	14	16	16	
	Physical Sciences	26	25	23	26	28	27	25	29	29	29	27	
	Social Studies	44	45	43	44	45	44	49	45	47	47	45	
Research Doctoral													
	Arts and Humanities	13	14	14	15	14	15	18	15	15	13	15	
	Biological Sciences	27	29	28	29	26	28	26	26	23	26	27	
	Physical Sciences	33	36	32	32	35	30	32	33	37	35	34	
	Social Studies	27	21	27	26	25	28	25	26	25	25	26	

Sources: UW-Madison Retention Awards Dataviews. Counts effective as of October 1, 2016.

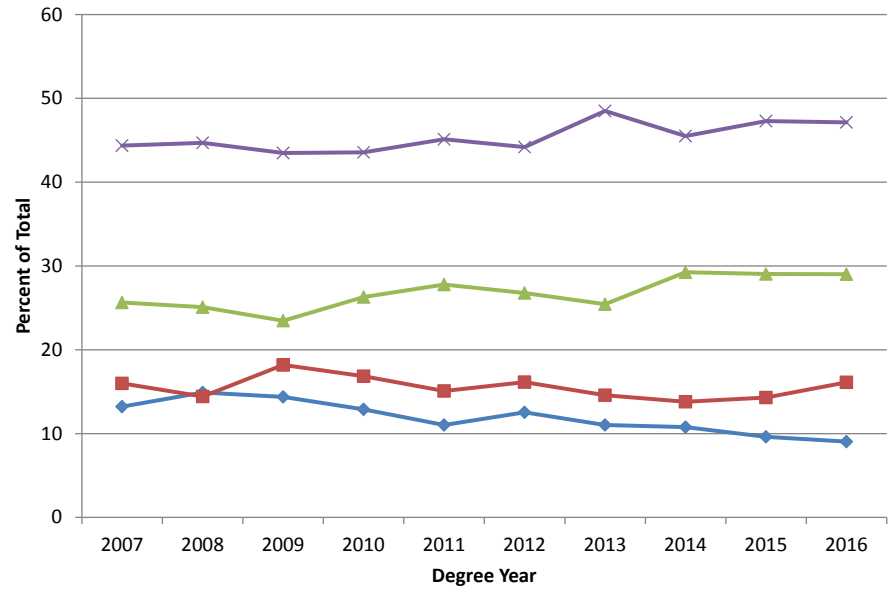
Counts are given as the head-count of degree-majors within each discipline. For example, a student earning two majors and one degree in one term is counted once in each division their majors were earned in.

Total is not a sum of degree-majors, but is a total number of degree recipients. Some degrees are not assigned to a discipline.

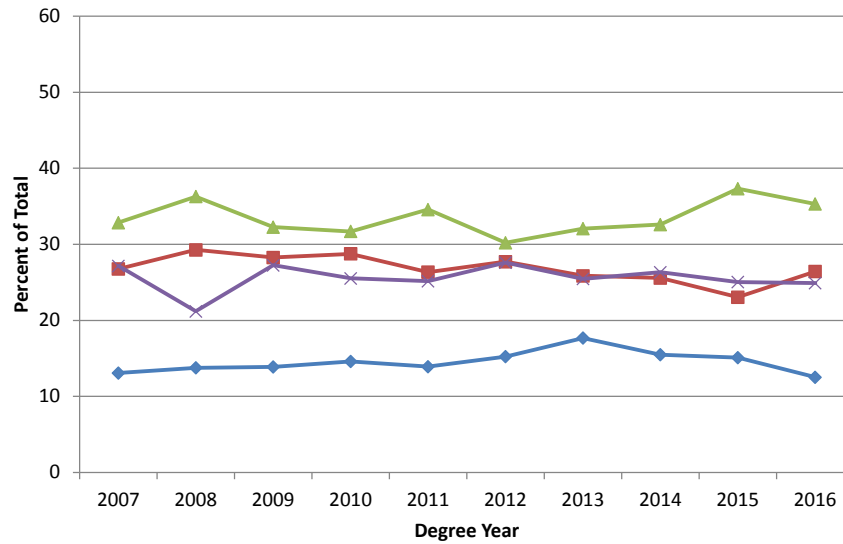
Bachelor's Degrees Conferred



Master's Degrees Conferred

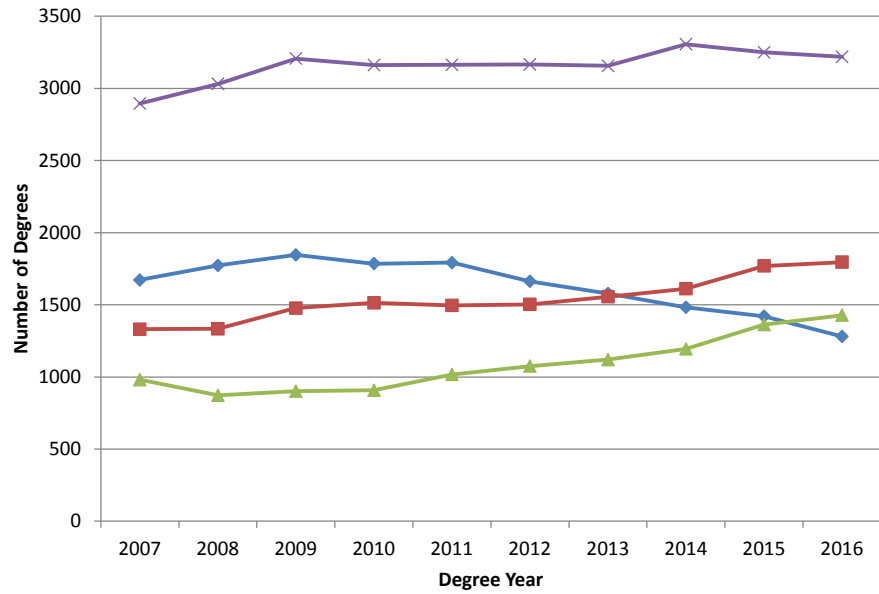


Research Doctoral Degrees Conferred

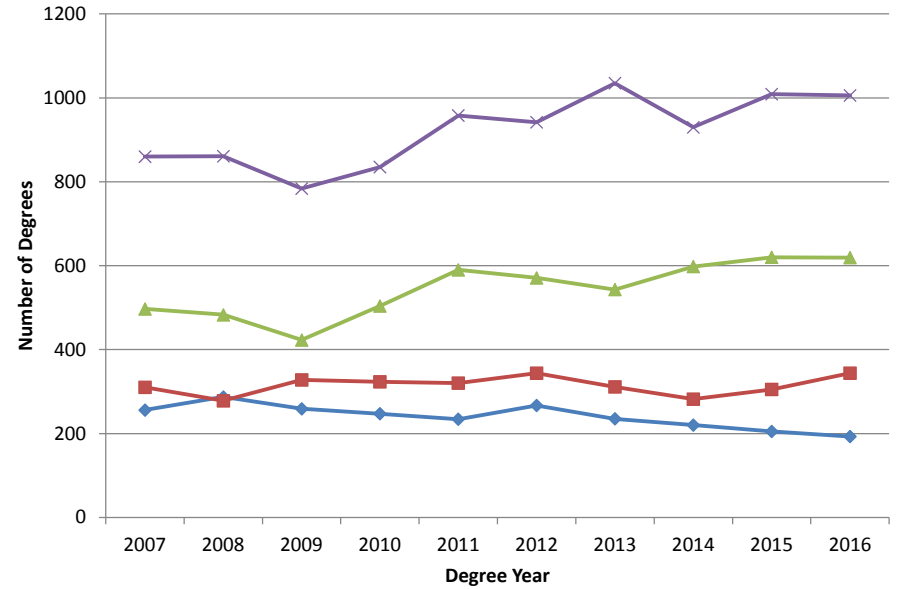


- ◆ Arts and Humanities
- Biological Sciences
- ▲ Physical Sciences
- × Social Studies

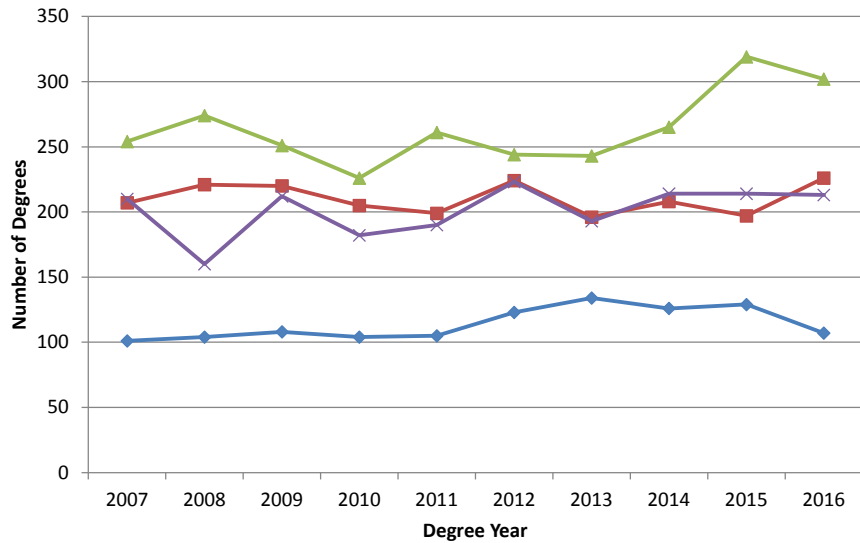
Bachelor's Degrees Conferred



Master's Degrees Conferred



Research Doctoral Degrees Conferred



- ◆ Arts and Humanities
- Biological Sciences
- ▲ Physical Sciences
- × Social Studies