



April 7, 2011

To: Paul DeLuca, Provost

From: Jocelyn Milner, Director of Academic Planning and Analysis 

Subject: Annual Report on Program Review and Low Enrollment Programs for the UAPC

Copies: Members of the University Academic Planning Council

One of the functions of the UAPC is to oversee academic program review. **This update is a basis for discussion at the April 21, 2011 UAPC meeting.** The last full report was made to the UAPC at the January 2010 meeting (an update on program review activity in the 2008-09 academic year). On June 9, 2010, I sent UAPC members a copy of all the materials that went to the deans in the annual request for their program review report. And then at the June 2010 UAPC meeting the UAPC adopted new program review guidelines. The full guidelines and prior program review reports are posted at http://apa.wisc.edu/acad_plng_ProgramReview.html

Implementing the 2010 Program Review Guidelines

The 2010 guidelines provide much more detailed guidance to deans and departments about program review compared to the 1995 guidelines they replaced.

One important new feature is that the 2010 program review guidelines specify a mechanism for bringing closure to a program review: the dean is required to prepare a summary memo that is sent back to the program with a copy to the provost. This summary provides an important reference point for the vigor and quality of academic programs. By making this expectation more explicit, we should have better records of program review going forward. Once collected, those summary letters can then be circulated to the UAPC for information and discussion.

Update on Program Reviews Conducted in 2009-10 and On-going

Most UW-Madison programs are in compliance with the requirement for program review at least once a decade. A report that provides the status of every UW-Madison program is posted at http://apa.wisc.edu/acad_plng_ProgramReview.html. I have attached a summary of the program review activity for 2009-10 that was prepared to comply with a UW System Administration reporting requirement so that you can get a sense for the scope of annual program review activity.

2011 Program Review Report, Page 1 of 4

Although most academic programs are in compliance with the policy, one situation remains perennially unresolved and **I seek your advice in how to bring this case to closure.**

1. MS Education and Math (School of Education), which has been low-enrollment (or no enrollment) for decades and has had repeated extensions on a resolution of program status. It has awarded only one degree in 30 years. In summer 2010, the dean agreed to have the program discontinued. No request to discontinue the program has been advanced from the School of Education. The program faculty have had many years to make a formal case to keep the program and no such case has been made. There are many possible remedies to this situation and I would appreciate your advice on how to get to closure.

A small set of programs represent cases that are taking some time to resolve but they give evidence of moving along. I provide this summary for your information. If these cases remain unresolved it will be helpful to have your advice on them in the future.

2. Genetics (BS, MS, PhD) (CALs and SMPH) – The review was due in 2008-09. The review was made more complicated because the Genetics programs are in the Department of Genetics in CALs and the Department of Medical Genetics in SMPH, which function together as a single department. The review was concluded in Fall 2010 and the SMPH and CALs each provided a summary memo to the department and to the provost.
3. BS Biology (CALs and L&S) – The undergraduate Biology major was implemented in its current form in 1998 and scheduled for a 10-year review in 2008. After some delays, in July 2010 Provost DeLuca charged Teri Balsler, director of the Institute for Biology Education, with initiating the review. The self-study is complete and the program review committee is being convened this spring.
4. PhD Mass Communications (CALs and L&S) is offered jointly by the School of Journalism and Mass Communications in L&S and the Department of Life Sciences Communication in CALs. The review of the shared PhD program was initiated by then-Interim Provost Julie Underwood in 2009 in response to a request for a change in structure of the program. The program was due for a 10-year review and it seemed prudent to conduct the review before making structural changes. After some delays, the self-studies for the two units have been completed (as of March 2011) and the program review committee is being appointed. The current plan is that the review committee will meet to conduct the review in Fall 2011. The Graduate School is now involved in coordinating the review process.
5. MBA Business: International Business (School of Business) is a low enrollment major. The current plan is for the major to be discontinued. We are awaiting a formal request from the School of Business.
6. BS Earth Science (School of Education) has been low-enrollment since 2007-08. A written summary of plans specifically for the future of this program was requested but it

has not been provided. The School of Education indicated in the program review report in 2010 that this program is important to a small number of students and they did not want to close it at this time because they are considering a range of changes to the secondary education programs.

7. Master Administrator Capstone Certificate – This program was scheduled for its first review in 2009-10. It has not made any awards for two years nor is it admitting students. I had informal notice that a program review that was in progress was suspended until next fall so the faculty can reconsider the status of the program. In early March I made an informal request through a School of Education contact that a written update on the status of the program be provided.
8. MS Therapeutic Science (School of Education) has been low-enrollment since 2007-08. It will be reviewed with the rest of the Kinesiology graduate program in 2012-13. This is the only graduate option for occupational therapists who were licensed with a bachelor's degree and seek to pursue graduate study. The need for such a program will eventually disappear as new OTs are prepared at the master's level and as all bachelor's prepared OTs who want to upgrade their credentials have done so.
9. Fundamentals of Clinical Research Capstone (SMPH) – The first review for this program was initiated in 2008-09 and is still underway. The program has only made 10 awards since implementation in 2001-02. It is one of several SMPH reviews that has been delayed but were revived in Fall 2010.
10. BS/MS in Medical Microbiology and Immunology (SMPH) – The review was due in 2005-06 and has been rescheduled repeatedly. A self-study is currently underway.
11. BS in Microbiology, MS in Bacteriology (CALS) – The review was due in 2008-09 but was delayed. The self-study is nearing completion and the program review committee is about to be charged.
12. PhD Microbiology (SMPH and CALS) - The review was due in 2008-09 but was delayed. The self-study is nearing completion and the program review committee is about to be charged. This program is shared by the Department of Bacteriology and the Department of Medical Microbiology and Immunology and both departments and their dean's offices as well as the Graduate School are involved in the program review process. The Graduate School has assumed a coordinating role.

Several five year reviews of new programs are underway and the self-studies of all of these programs are expected from the relevant dean's office by the end of the academic year.

13. Doctor of Audiology (L&S) – The five-year review for this new program was initiated in July 2010. The self-study is completed and is under review by the College of Letters & Science. The review will be conducted jointly with UW-Stevens Point and UW System Administration.

14. Master of Gender and Women's Studies (L&S) - The five-year review for this new program was initiated in July 2010.
15. Master of Public Health (SMPH) - The five-year review for this new program was initiated in July 2010. The self-study is scheduled to be completed by the end of the academic year.
16. MS Occupational Therapy (School of Education) - The five-year review for this new program was initiated in July 2010.

Low Enrollment Programs

Annually we check the trends in degrees awarded for programs that are low-enrollment. Some of these programs are perennially low-enrollment and are deemed of sufficient value by the program faculty and the dean to be continued. For others, the dean is asked to indicate the status of the program – is it of value to continue or is it appropriate to consider discontinuing the program? The outcomes of some of those exchanges are noted above. Annotated tabulations of low-enrollment majors and certificate programs, including the status of the program, are attached.

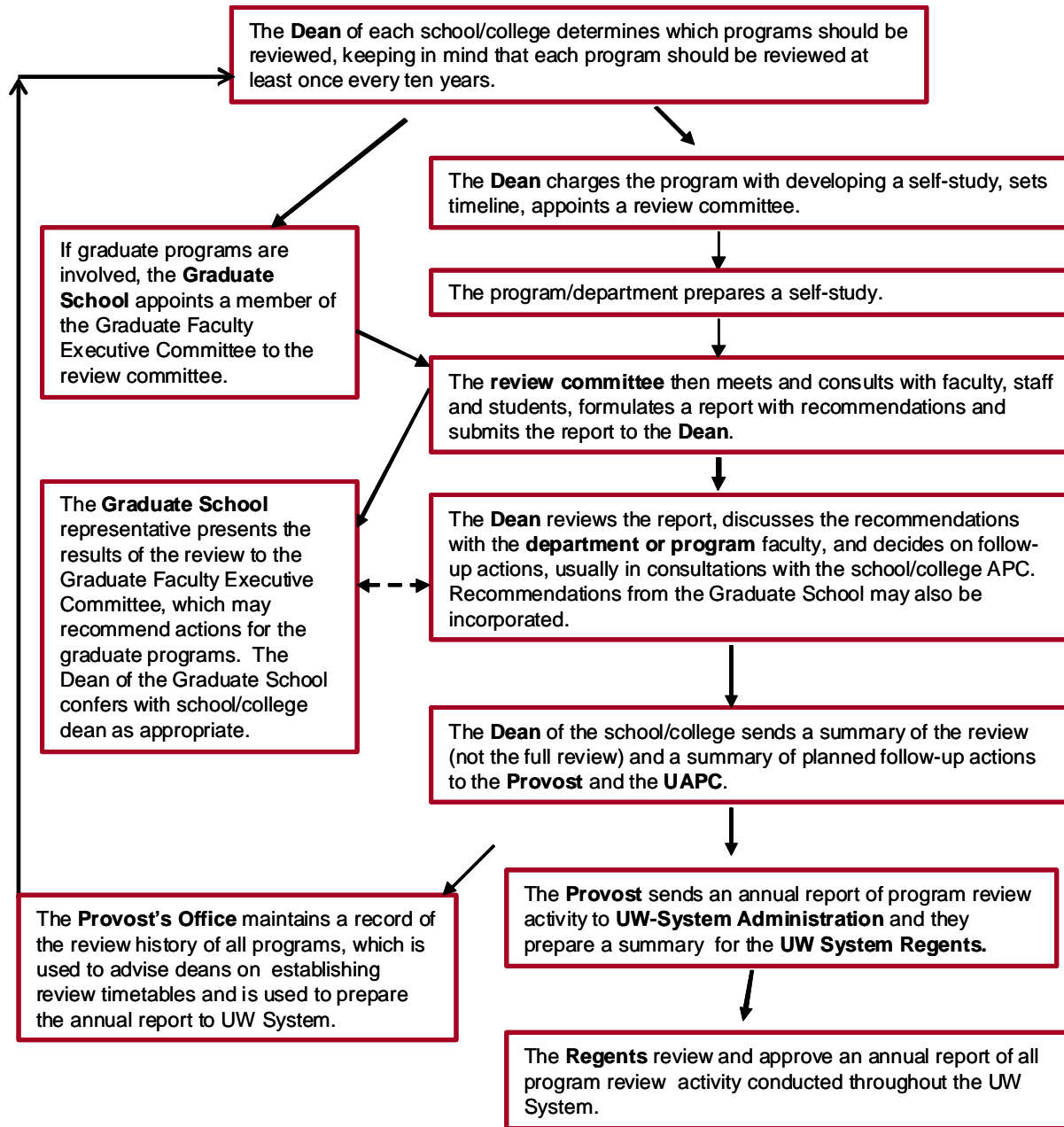
To better illustrate the range of program size, I have attached graphs of the size distribution of bachelor's, master's, and research doctoral programs. These graphs provide an illustration of how many programs we have in the range in number of degrees in each program in a given year. Detailed trend analysis of degrees awarded by major are available on line. (http://www.apa.wisc.edu/degrees_DegreesTrends.html)

I look forward to discussing this report with you and with the UAPC.

Attachments

1. Program Review Flowchart
2. 2010 Annual Program Review Report to System Administration
3. Low Enrollment Program List
4. Size Distribution of Academic Programs

Appendix I. Flowchart: Overview of UW-Madison Academic Program Review Process



November 2009

Appendix 2.

Institutional and Joint Program Review Summary
UW - Madison
2009-10

Program or Program Area	Review Status	Outcome of Completed Reviews	One-paragraph Description for Completed Reviews
Institutional or Joint Review	(Initial / On-Going / Completed / Deferred / Upcoming)	(Continuation / Conditional Continuation / Discontinuation)	Or Update on Initial Joint Review Progress
Initial Joint Review Progress Update			
Creative Writing, MFA	Completed.	Continue	See information sent to UWSA on May 28, 2010
Second Language Acquisition, PhD	Completed.	Continue	See information sent to UWSA on May 28, 2010
Engineering Physics, BS	Completed	Continue	See information sent to UWSA on May 28, 2010
Gender and Women's Studies, MA	Charged, July 1,2010		
Audiology, Doctor of (with UWSP)	Charged, July 1,2010		
Public Health, Master of	Charged, July 1,2010		
Occupational Therapy, MS	Charged, July 1,2010		
Institutional Program Review Activity in 2009-10, and Program Review Scheduled to be Initiated in 2010-11			
<i>College of Agricultural and Life Sciences</i>			
Nutritional Sciences BS – Dietetics Program Accreditation	Completed	Continue program.	See below.
Genetics, BS, MS, PhD; Medical Genetics MS, PhD (Genetics departmental review)	Initiated 2006-07; Continuing in 2009-10, final report expected in Fall 2010.		
Bacteriology, BS, MS and Microbiology, PhD (Bacteriology departmental review)	Initiated in 2006-07; Delayed; To be reinitiated in 2010-11.		
Entomology, BS, MS, PhD (departmental review)	Initiated in 2006-07. Ongoing. Final report expected in Fall 2010.		
Recreation Resources Management, BS	Originally scheduled for 2009-10. Ongoing. To be finalized in 2010-11.		
Mass Communications, PhD (with L&S)	Initiated in 2009-10; ongoing.		
Biology (BS major), with L&S and ICBE	To be initiated in 2010-11.		
Food Science (BS, MS, PhD), dept review	To be initiated in 2010-11.		

Program or Program Area	Review Status	Outcome of Completed Reviews	One-paragraph Description for Completed Reviews
Institutional or Joint Review	(Initial / On-Going / Completed / Deferred / Upcoming)	(Continuation / Conditional Continuation / Discontinuation)	Or Update on Initial Joint Review Progress
Horticulture (BS, MS, PhD), dept review	To be initiated in 2010-11.		
Plant Pathology (BS, MS, PhD), dept review	To be initiated in 2010-11.		
Soil Science (BS, MS, PhD), dept review	To be initiated in 2010-11.		
<i>School of Education</i>			
Counseling Psychology, PhD, accreditation review	On-going from 2009-10.		
Education and Math, MS	On-going from prior years. , Low-enrollment. Action to discontinue the program is expected in Fall 2010.		
Curriculum and Instruction, MS/PhD	On-going from 2009-10. To be finalized in fall 2010.		
Earth Science, BSE	Scheduled for 2009-10. Low enrollment. Response expected in Summer 2010.		
Science Education, MS	Scheduled for 2008-09. Delayed. Rescheduled for 2010-11.		
Therapeutic Science, MS	Scheduled for 2009-10. Low enrollment. Response expected in Summer 2010.		
<i>College of Engineering</i>			
Materials Engineering, MS/PhD	Initiated in 2009-10; Ongoing in 2010-11 ((internal review stage)		
Materials Science and Engineering, BS	Initiated in 2009-10; Ongoing in 2010-11 ((internal review stage)		
Mechanical Engineering, BS, MS/PhD	Initiated in 2009-10; Self-study delayed and expected in 2010-11.		
Industrial Engineering, BS, MS, PhD	Scheduled for 2009-10; Ongoing in 2010-11 (external		

Program or Program Area	Review Status	Outcome of Completed Reviews	One-paragraph Description for Completed Reviews
Institutional or Joint Review	(Initial / On-Going / Completed / Deferred / Upcoming)	(Continuation / Conditional Continuation / Discontinuation)	Or Update on Initial Joint Review Progress
	review committee stage).		
Chemical Engineering, BS, MS, PhD	Scheduled for 2010-11		
Engineering Mechanics, BS, MS, PhD	Scheduled for 2010-11		
Nuclear Engineering, BS	Scheduled for 2010-11		
Nuclear Engineering and Engineering Physics, MS, PhD	Scheduled for 2010-11		
<i>School of Human Ecology</i>			
Consumer Affairs, BS	Initiated in 2009-10. Ongoing. Report expected Fall 2010.		
Retailing, BS	Initiated in 2009-10. Ongoing. Report expected Fall 2010.		
Personal Finance, BS	Accreditation review initiated 2008-09. Completed.	Program continued.	See below.
<i>Nelson Institute for Environmental Studies</i>			
Environmental Monitoring, MS/PhD	Completed	Programs discontinued.	
<i>College of Letters and Science</i>			
Asian Studies (BS/BA), South East Asian Studies (MA), LCA (BA, MA, PhD)	Completed	Programs continued	See below.
Geographic Info Systems (Capstone Certificate)	Completed	Program continued	See below.
Linguistics (departmental review)	Completed	Programs continued	See below.
Communicative Disorders (departmental review)	Completed	Program continued	See below.
Theatre and Drama, BA, BS, MA, MS, MFA, PhD, accreditation review	Completed	Programs continued	See below.
Economics (departmental review)	Ongoing; to be completed in Fall 2010		
Geology, MS, PhD (departmental review)	Ongoing; to be completed in Fall 2010		
Geology and Geophysics, BS (departmental review)	Ongoing; to be completed in Fall 2010		

Program or Program Area	Review Status	Outcome of Completed Reviews	One-paragraph Description for Completed Reviews Or Update on Initial Joint Review Progress
Institutional or Joint Review	(Initial / On-Going / Completed / Deferred / Upcoming)	(Continuation / Conditional Continuation / Discontinuation)	
English (departmental review)	Initiated in 2008-09. Ongoing. To be completed in Fall 2010		
Political Science (departmental review)	Initiated in 2008-09. Ongoing. To be completed in Fall 2010		
Portuguese (departmental review)	Initiated in 2008-09. Ongoing. To be completed in Fall 2010.		
Psychology (departmental review)	Initiated in 2008-09. Ongoing.		
Spanish (departmental review)	Initiated in 2008-09. Ongoing. To be completed in Fall 2010.		
Statistics (departmental review)	Initiated in 2008-09. Ongoing. To be completed in Fall 2010		
Mass Communications, PhD (with CALS)	Initiated in 2009-10; ongoing.		
Atmospheric and Oceanic Sci (BS, MS, PhD)	Scheduled for 2010-11		
Biology major (BS), ICBE/CALS/L&S	Scheduled for 2010-11		
Cartography and Geo Info Syst (MS)	Scheduled for 2010-11		
Geography (BA, BS, MA, MS, PhD)	Scheduled for 2010-11		
History (BA, BS, MA, MS, PhD)	Scheduled for 2010-11		
History of Sci, Med, and Tech (BA, BS, MA, MS, PhD)	Scheduled for 2010-11		
Journalism (BS, BA)	Scheduled for 2010-11		
Russian (BA)	Scheduled for 2010-11		
Slavic Lang and Lit (MA, PhD)	Scheduled for 2010-11		
Zoology (BS, MS, PhD)	Scheduled for 2010-11		
<i>School of Medicine and Public Health</i>			
Clinical Lab Sciences, BS	Completed.	Program discontinued.	
Medicine, MD program (Accreditation)	Completed.	Program continued	See below.
Physician Assistant Program (Accreditation)	Completed,	Program continued	See below.
Medical Microbiology and Immunology (BS) (with College of Letters and Science), MS	Ongoing; Delayed in 2009-10; Rescheduled for 2010-11.		
Microbiology PhD, with CALS and the	Ongoing; Delayed in 2009-10;		

Program or Program Area	Review Status	Outcome of Completed Reviews	One-paragraph Description for Completed Reviews
Institutional or Joint Review	(Initial / On-Going / Completed / Deferred / Upcoming)	(Continuation / Conditional Continuation / Discontinuation)	Or Update on Initial Joint Review Progress
Bacteriology Dept review	Rescheduled for 2010-11.		
Medical Genetics, MS/PhD (Genetics Department review)	Initiated in 2008-09; Ongoing; In final stages of review.		
Molecular and Cellular Pathology, MS/PhD	Scheduled for 2009-10; Delayed to 2010-11.		
Bioinformatics Capstone Certificate	To be initiated in 2010-11		
Fundamentals of Clinical Research Capstone Certificate	To be initiated in 2010-11		
Laboratory Quality Management Capstone Certificate	To be initiated in 2010-11		
Cancer Biology, PhD	To be initiated in 2010-11		
Endocrinology Reproductive Physiology PhD	To be initiated in 2010-11		
Neuroscience, MS, PhD	To be initiated in 2010-11		
<i>School of Nursing</i>			
Nursing, BS, MS, Accreditation	Completed.	Program continued	See below.
Nursing, PhD	Scheduled for 2010-11		
<i>School of Pharmacy</i>			
Pharmaceutical Science, MS/PhD	Completed.	Program continued	See below.
Pharmacology and Toxicology, BS	Completed.	Program continued	See below.
Social and Admin Sci – Pharmacy, MS/PhD	Completed.	Program continued	See below.
<i>School of Veterinary Medicine</i>			
Comparative Biomedical Sciences, MS/PhD	Completed.	Program continued.	See below.

Summaries for Completed Reviews

Asian Studies (BS, BA) - The review included the Asian Studies major and the East Asian certificate. Enrollment in the major is growing. That growth is fed by student praise for their experience in the program and by the dynamic gateway course, Introduction to East Asia Civilization. While Japanese language instruction is strong, Chinese language instruction was identified as needing attention. One challenge faced by this

interdisciplinary program is that faculty with a scholarly and teaching focus on East Asia are located mostly in the humanities. Ideally more faculty in the social studies disciplines would contribute to this interdisciplinary program but that shift is dependent on the social studies departments making hires of faculty who have a scholarly focus on East Asia. Despite these challenges, the program has many strengths.

South East Asian Studies (MS, MA) - The program faculty were commended for success in overseeing a “healthy and viable program that plays a key role in enriching the intellectual and cultural lives on campus”. One perennial challenge is assuring that there is regular course work in a breadth of disciplines available to students in this interdisciplinary program. Especially noticeable at this time is a deficient of courses in the social sciences, which will potentially be remedied if faculty who have scholarly expertise in Asia are hired into social studies departments. Despite this challenge, the program has many strengths. The program faculty were commended by the dean for openness with which the review was conducted.

Comparative Biomedical Sciences, MS/PhD – The program fills an interdisciplinary niche at UW-Madison with its highly integrated and comparative approach to research in biomedicine. Strengths include strong program faculty, close ties to the Veterinary Medicine program, flexible curriculum, a student body that includes international students and minority students, and a focus on program improvement by current leadership. Recommendations for improvement were to reduce the required coursework, improve monitoring of student progress to degree, improve the committee structure, seek more funding for first-year student lab rotations, and periodically review of the faculty trainers who participate in the program.

Communicative Disorders (BS, MS, PhD) – The review highlighted the impressive research productivity of the faculty, the high quality of the undergraduate majors, the ability to attract outstanding PhD students, and the outstanding work of the Clinic. One recommendation was to strengthen communication within the department in such a way that supports even advising for students in all sub-specialties. A goal of the undergraduate program is to prepare students for entry to post-baccalaureate programs and eventual clinical certification. Interviews with students and placement information confirmed that this goal consistent with student aspirations and realized by graduates. The review committee suggested that version of the program that had more of a liberal arts emphasis (rather than clinical preparation) might benefit students. The PhD program is recognized as a particular instructional strength of the department.

Geographic Information Systems (Capstone Certificate) – GIS was the first capstone certificate to be established at UW-Madison and the first to undergo a full review. The program was judged to offer great value to students and to the University. The curriculum may benefit from the addition of courses currently offered in departments outside Geography and from some focused attention to the balance between basic and applied scholarship. The program faculty agree that providing the appropriate array of courses and keeping current with a quickly evolving field have always been at the core of the program delivery.

Linguistics (BS, BA, MS, MA, PhD)- The Linguistics department review (self-study and review committee report) emphasized several strengths of the program – an increase in the number of undergraduate majors, an increase in the number and variety of courses available for undergraduates, and faculty success in research. In addition, the review raised a number of questions about the future direction of the department. For example, the review report observed that the department may benefit from more actively connecting with faculty in other departments who have scholarly

expertise in linguistics and by defining focused areas of scholarship to build as departmental strengths. A special committee was appointed in late 2009 by the dean to examine those issues in more detail.

Medicine (M.D. Program) – The MD program underwent its accreditation review by the Liaison Committee of Medical Education (LCME). Accreditation was continued for an eight year term until 2017-18. Strengths include; dynamic, accessible and creative leadership; student services that are robust and highly valued; excellent facilities available to support the educational program; an effective working relationship between the course and clerkship directors; and well-funded training options for students. Areas for on-going attention include: strengthened the assessment of clerkships; expanded narrative descriptions of student performance; more success of the several programs in place designed to assist in recruiting students and faculty for diversity; continued implementation of the revised curriculum.

Nursing BS, MS programs – The bachelor’s and master’s Nursing programs at UW-Madison were reviewed and re-accredited by the Commission on Collegiate Nursing Education (CCNE). The CCNE review found that the programs met all of the standards of accreditation and there were no compliance concerns. The report lauded the program for effective leadership, strong faculty, good institutional support for teaching and scholarship, a well-developed and progressive curriculum, well-prepared students who were able to articulate the program’s learning goals, strong infrastructure for assessing student learning and program evaluation, a culture in which “teaching really matters”, and expressions of pride in the program by students, faculty and staff.

Nutritional Sciences, BS, Didactic Program in Dietetics (option) – The accrediting agency recognized that the program met all accreditation standards and lauded the commitment to quality and continued improvement of dietetics education demonstrated throughout the accreditation process.

Personal Finance, BS – The Certified Financial Planner Board of Standards Inc. (CFP Board) reviewed the registration of the BS-Personal Finance program with the CFP Board, and extended registration until Oct 2010 when the next routine report is due. Reports are required by CFP on an annual basis from all PF programs.

School of Pharmacy Academic Programs – A single external review committee made a site visit to the School of Pharmacy and reviewed the three non-professional academic programs: BS in Pharmacology and Toxicology, MS-Pharmacy, MS/PhD in Pharmaceutical Sciences, MS/PhD in Social and Administrative Pharmaceutical Sciences. The program faculty have national and international reputations as scholars, generated by strong records of publication and grant-getting. Consequently, the faculty attract strong students at the graduate and undergraduate level. To strengthen the graduate programs the review committee recommended that the graduate program committee be strengthened in numbers and visibility, that recruiting be conducted more broadly, that there be more active recruiting for diversity, and that more focused attention be given to graduate student funding. The BS program has been able to attract and benefit from well-prepared undergraduates. At this time the program faculty seek to develop a broader and more intentional recruiting strategy, with a goal of increasing overall numbers and increasing diversity of undergraduates. Making more summer research experiences available to undergraduates is a future goal. The review committee recommended the formation of an advisory board for the undergraduate program.

Physician Assistant Program (BS until May 2010; MPAS after May 2010) – The PA program underwent accreditation by the Accreditation Review Commission on Education for the Physician Assistant (ARC-PA). The program was awarded continued accreditation for up to 74 students. The next review will be in 2015-16. The program was asked to make some adjustments: expand instruction in normal psychological development of adults; expand instruction in quality assurance and risk management; provide a more complete summative evaluation of each student at the end of the program. The program is currently undergoing a substantial curricular change in the shift from the bachelor's degree level to the Master of Physician Assistant Studies (MPAS).

Theatre and Drama (BA, BS, MA, MS, MFA, PhD) – The Department of Theatre and Drama underwent an accreditation review by the National Association of Schools of Theatre. UW-Madison's theatre and drama programs meet NAST standards and were reaccredited until 2019-20. Strengths include excellent faculty and staff, quality undergraduate and graduate students, a nationally celebrated PhD program, an emphasis on interdisciplinarity, outreach programming, and emphasis on diversity. Short term improvements are to more clearly define the duties of academic staff, to gain sufficient funding to support use of the Union Memorial Theatre, explore additional means of funding graduate recruitment and the production budget. Longer term challenges are to fill open faculty positions and meet the need for a proscenium performance space.

Appendix 3.

UW-Madison Academic Majors that Meet the "Low Enrollment" Criteria Based on Degrees Conferred, 2001 to 2010

Code	Major Name	Average # Degrees		This program was reviewed in the past 10 years	Note
		Last 5 years	Last 10 years		
Bachelor's Level Majors					
157	Chemistry Course	0.6	1.2	yes	The overlapping Chemistry major is not low-enrollment. School of Education cites this program as an important, if rarely selected, educational opportunity. Awaiting formal Dean's letter (July 2010)
258	Earth Science	0.8	1.1	yes	
Master's Level Majors					
116	Biometry	0.8	1.1	yes	Reviewed in 2009; chronic low-enrollment issue not addressed
575	Business: International Business	0.0	4.0	yes	To be discontinued, awaiting School of Business formal action (October 2010)
346	Education and Math	0.6	0.3	yes	To be discontinued, awaiting Curriculum & Instruction and School of Education formal action (July 2010)
598	Latin	0.0	0.1	yes	Retained because this program is important to program array.
670	Materials Engineering	0.2	0.5	yes	Under review in 2010-11
	Therapeutic Science	0.2	0.5	yes	School of Education concludes that this program is important as a route to up-credential students who formerly earned a BS-Occupational Therapy (July 2010)
972					
Doctoral Level Majors					
670	Materials Engineering	0.4	1.7	yes	Under review in 2010-11

Notes:

Low-enrollment programs are defined as those in which 5 or fewer degrees have been granted in the last 5 years.

Excluded from this list are

1. newly implemented programs
2. discontinued programs
3. masters or doctoral programs in which the corresponding graduate level program is not low-enrollment.

Sources: Degree Trends Analysis, http://apa.wisc.edu/degrees_DegreesTrends.html;
2010 Program Review database and annual dean's reports on program review.

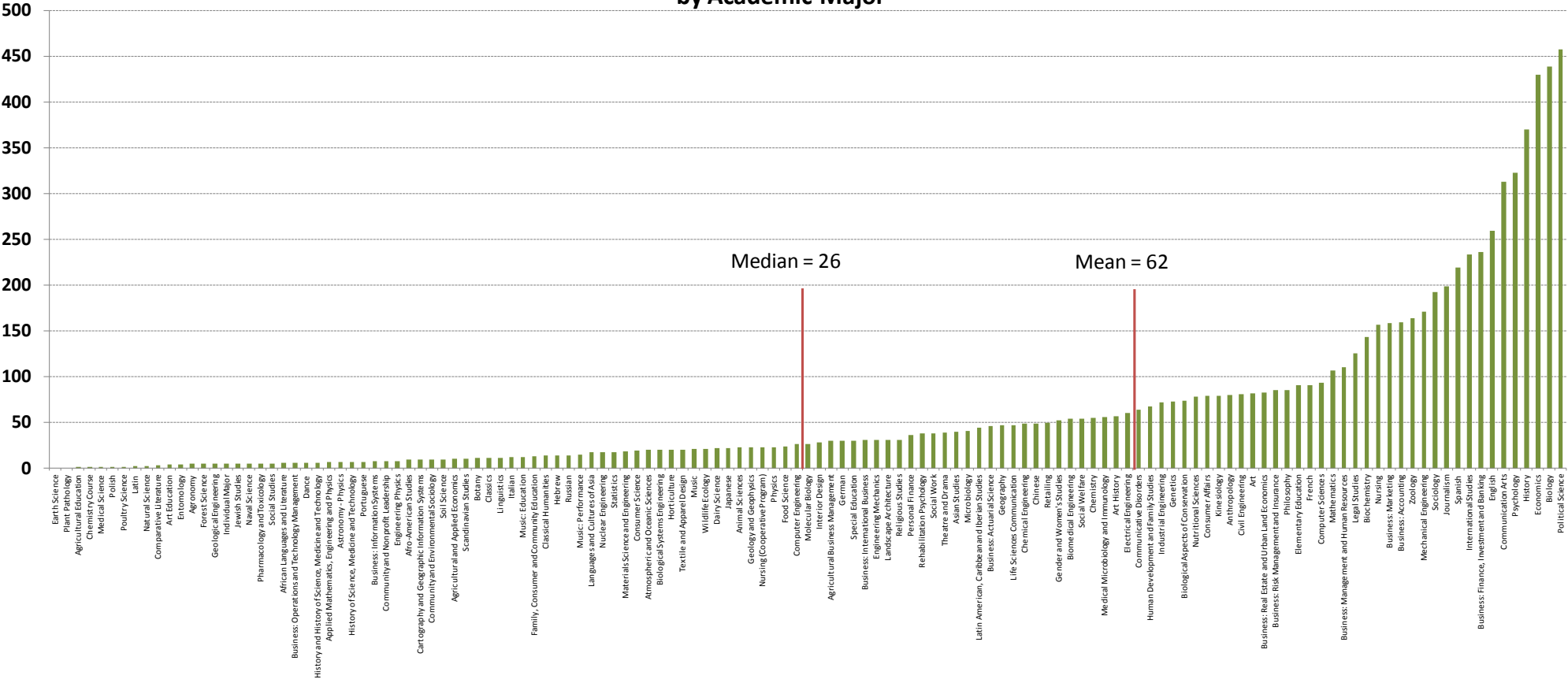
Academic Major Size Distribution: 2009-10 Degree Recipients

The following three graphs display the distribution in size (as determined by number of degree recipients) of academic majors at the Bachelors, Master's, and Doctoral levels. Students with more than one major are counted once in each major earned. All data is from the 2009-10 academic year, which includes Summer 2009, Fall 2009, and Spring 2010 degrees posted through October 1, 2010.

For questions or additional information, please contact Sara Lazenby (slazenby@wisc.edu).

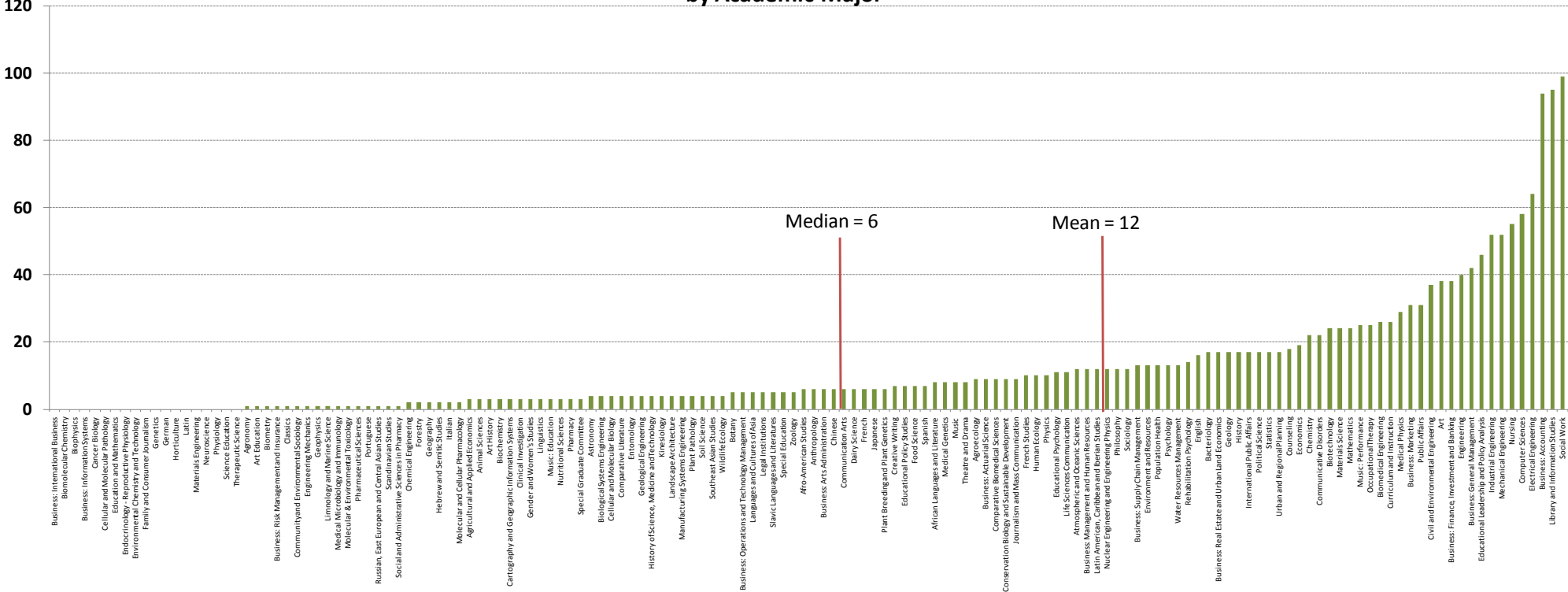
Academic Major Size Distribution: 2009-10 Degree Recipients

2009-10 Bachelor's Degree Recipients by Academic Major



Academic Major Size Distribution: 2009-10 Degree Recipients

2009-10 Master's Degree Recipients by Academic Major



Academic Major Size Distribution: 2009-10 Degree Recipients

2009-10 Doctoral Degree Recipients by Academic Major

