



September 28, 2012

To: Paul DeLuca, Provost

From: Jocelyn Milner, Director of Academic Planning and Institutional Research

Subject: Update on 2011-12 Program Review for the UAPC

Copies: Members of the University Academic Planning Council

---

One of the functions of the UAPC is to oversee academic program review. This update is a basis for the annual discussion on program review at an upcoming UAPC meeting.

Information about program review at UW-Madison is posted at <http://apir.wisc.edu/programreview.htm>. The web page includes the UAPC policy on program review as adopted by the UAPC in 2010 and a number of annual reports. Attachment 1 is a flow-chart that provides an overview of the program review process, with the central role of deans highlighted.

Program review is one way that deans and program faculty monitor program quality. The central requirement is that academic programs must be reviewed at least once every 10 years, in keeping with UAPC policy, UW System Board of Regents policy, and federal Title IV financial aid regulations.

Annually we collect an update on the status program review from the deans. A dean's designee provides updated information on which programs are scheduled for review and provides a summary report on each review that has been completed. That information is recorded in a database and summary reports are posted on the web site and provided to UW System Administration. For example, a 33-page listing of the program review status of all UW-Madison academic programs is posted at the URL given above. A second example is attachment 2, which is the annual program review report provided to UW System Administration at their request in July 2012. The System report includes a tabulation of program reviews that are active or completed followed by short summaries of completed reviews. It is used as a basis for a report by UW System Admin to the Board of Regents.

Based on 2012-13 program review activity, here are a few key observations:

- In 2011-12, 29 reviews covering 37 programs were completed. A large number of reviews are ongoing – 25 reviews for 48 programs have been initiated and are on-

2011-12 Program Review Report, Page 1 of 3

going. Most of these ongoing reviews will probably conclude in 2012-13. An additional 63 reviews for 109 programs are scheduled to begin in 2012-13 or 2013-14.

- UW-Madison has about 440 degree/major programs and approximately 60 certificate programs. Consequently, reviews of about 50 programs need to be completed each year for each program to be reviewed once every 10 years.
- The 2010 program review guidelines specify the requirement for the dean's summary memo. The guidelines are a useful reference for my requests that deans' offices provide summary letters that are more focused on student learning, rather than primarily focusing on departmental issues of research and program faculty.
- Letters & Science streamlined their program review process in 2011-12 and several reviews were delayed while that process was developed. A large number of reviews are scheduled to be initiated in 2012-13. The College of Engineering has also decided to substantially streamline the program review process, focusing more on programmatic issues and on cross-cutting reviews that combine the review of several academic programs. The Nelson Institute is taking a fresh look at program review and has scheduled a number of over-due reviews.
- Each November we audit the trends in degrees awarded for degree/major and certificate programs that are low-enrollment. (Low-enrollment programs are defined in the policy as those with fewer than five awards in five years.) Such programs get an automatic request for a review from the provost's office. After more than a decade of attention, we have very few low-enrollment programs other than those that have a strong academic rationale for continuing.
- Two five-year reviews of new programs at the five-year mark are still pending resolution: the MS in AgroEcology and the Master of Public Health. I will work on convening UAPC committees for both of these in Fall 2012.

Here is a status update on selected program reviews that have been previously discussed by the UAPC:

1. BS Biology (CALs and L&S) was implemented in its current form in 1998 and scheduled for a 10-year review in 2008. After some delays, in July 2010 Provost DeLuca charged the director of the Institute for Biology Education, with initiating the review. The self-study was completed in spring 2011 and the program review committee provided a report to Dean Sandefur and Dean VandenBosch in spring 2012. A final report is pending.
2. Master Administrator Capstone Certificate (SoEd) was scheduled for its first review in 2009-10. It was approved in 2003 and it has not admitted any students since 2008, although it has not formally suspended admissions. It is already in the third year of no admissions. You asked the School of Education to provide a plan to reopen the program or a request to formally discontinue the program by May 1, 2012. The

program faculty complied with this request and provided a substantial report that described a number of possible futures for the program. However the report did not address the question of whether the program would be reopened or formally discontinued. They have been asked to provide a response by December 1, 2012.

3. BS in Microbiology, MS in Bacteriology (CALs) – The review was due in 2008-09 but was delayed. The self-study was completed in 2011-12 and the program review committee is currently working.
4. PhD Microbiology (SMPH and CALs) - The review was due in 2008-09 but was delayed. The self-study has been completed and submitted to the Graduate School. The Graduate School has assumed a coordinating role and convened the review committee and the work of the committee is ongoing. This program is shared by the Department of Bacteriology and the Department of Medical Microbiology and Immunology.

I look forward to discussing this report with you and with the UAPC.

#### Attachments

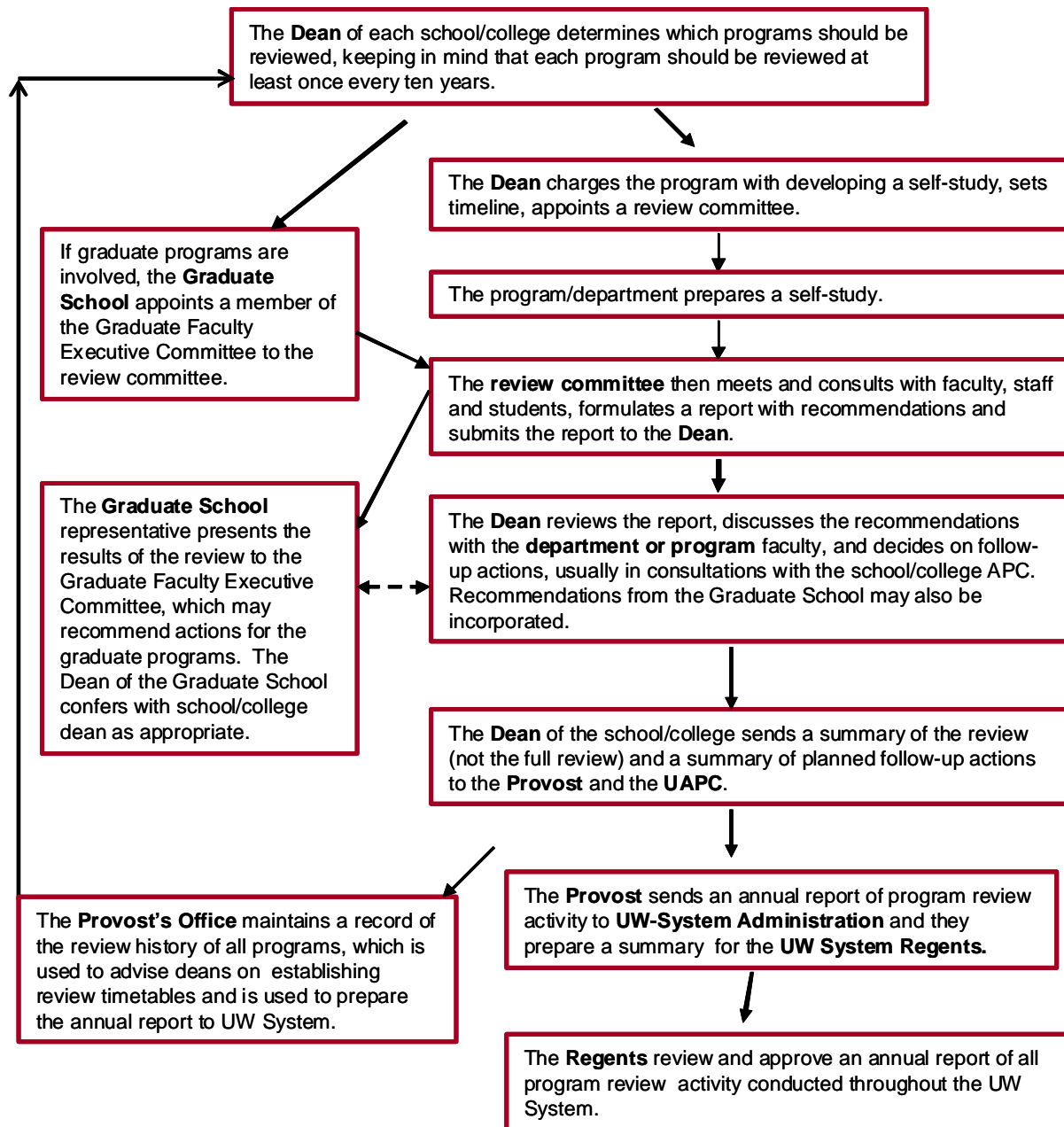
Attachment 1 – Program review flow-chart

Attachment 2 – Program review report to UW System Admin, 2011-12 Activity

See also the UW-Madison Program Review Summary, with lists all academic programs and the program review status of each program.

<http://apir.wisc.edu/uapc/BySchoolCollegeReport.9.21.2012.FINAL.pdf>

## Appendix I. Flowchart: Overview of UW-Madison Academic Program Review Process



November 2009

Institutional and Joint Program Review Summary  
UW - MADISON  
2011-12

Program or Program Area	Review Status (Initial / On-Going / Completed / Deferred with Approval / Deferred / Upcoming)	Outcome of Completed Reviews (Continuation / Conditional Continuation / Discontinuation)	One-paragraph Description for Completed Reviews* Or Update on Initial Joint Review Progress
Initial Joint Program Reviews - Progress Update			
Doctor of Audiology	Self-study complete, program review committee work completed; governance review completed at UW-Madison; awaiting UWSP sign off before sending to UWSA.	Recommendation to continue.	See below
MA Gender and Women's Studies	Self-study complete, program review committee work completed.	Review completed and submitted to UWSA. Recommendation to continue.	See below
MS Occupational Therapy	Self-study complete, program review committee work completed.	Review completed and submitted to UWSA. Recommendation to continue.	See below
Master of Public Health	Self-study completed. The review committee will be convened in Fall 2012.		
MS Agroecology	Self-study in progress; delivery expected to provost's office in Summer 2012. The review committee will be convened in Fall 2012.		

Program or Program Area	Review Status (Initial / On-Going / Completed / Deferred with Approval / Deferred / Upcoming)	Outcome of Completed Reviews (Continuation / Conditional Continuation / Discontinuation)	One-paragraph Description for Completed Reviews* Or Update on Initial Joint Review Progress
Doctor of Physical Therapy.	Joint review is due to be initiated in Fall 2012. If new provisions are adopted and joint reviews are not required, UW-Madison will treat the successful 2010-11 accreditation review as the first/joint review after implementation.		
<b>Institutional Program Review Activity 11-12</b>			
Animal Sciences BS, MS, PhD; BS in Poultry Science (Animal Science Dept review, CALS)	Initiated 2011-12; ongoing.		
Bacteriology, MS (CALC)	Initiated in 2009-10; ongoing; self-study complete and work of review committee is in progress.		
Biology, BS (CALC, L&S)	Ongoing, self-study completed; program review committee work complete; awaiting final dean review.		
Biochemistry, BS, MS, PhD (CALC)	Initiated in 2011-12; ongoing.		

Program or Program Area	Review Status (Initial / On-Going / Completed / Deferred with Approval / Deferred / Upcoming)	Outcome of Completed Reviews (Continuation / Conditional Continuation / Discontinuation)	One-paragraph Description for Completed Reviews* Or Update on Initial Joint Review Progress
Food Science, BS, MS, PhD (CALS)	Initiated in 2011-12; ongoing; self-study in progress		
Horticulture, BS, MS, PhD, (CALS) (Horticulture Dept review)	Ongoing; self-study complete and program review committee is working.		
Mass Communications, PhD (CALS and Letters & Science )	Completed	Continued	See below
Microbiology, BS (CALS and L&S)	Initiated 2008-09; ongoing; self-study complete; program review committee is working.		
Microbiology, PhD (CALS and SMPH)	Initiated 2008-09; ongoing; self-study complete; program review committee is working.		
Plant Pathology, BS, MS, PhD (CALS)	Completed	Continued	See below
Business, PhD (School of Business)	Institutional review is ongoing; self-study complete; program review committee is working.		

Program or Program Area	Review Status (Initial / On-Going / Completed / Deferred with Approval / Deferred / Upcoming)	Outcome of Completed Reviews (Continuation / Conditional Continuation / Discontinuation)	One-paragraph Description for Completed Reviews* Or Update on Initial Joint Review Progress
BBA Business: Accounting	AACSB accreditation review; completed.	Continue programs. Next accreditation review 2016-17.	See below
BBA Business: Actuarial Science	AACSB accreditation review; completed.	Continue programs. Next accreditation review 2016-17.	See below
BBA Business: Finance	AACSB accreditation review; completed.	Continue programs. Next accreditation review 2016-17.	See below
BBA Business: Investment and Banking	AACSB accreditation review; completed.	Continue programs. Next accreditation review 2016-17.	See below
BBA Business: Information Systems	AACSB accreditation review; completed.	Continue programs. Next accreditation review 2016-17.	See below
BBA Business: International Business	AACSB accreditation review; completed.	Continue programs. Next accreditation review 2016-17.	See below
BBA Business: Management and Human Resources	AACSB accreditation review; completed.	Continue programs. Next accreditation review 2016-17.	See below
BBA Business: Marketing	AACSB accreditation review; completed.	Continue programs. Next accreditation review 2016-17.	See below
BBA Business: Operations and Technology Management	AACSB accreditation review; completed.	Continue programs. Next accreditation review 2016-17.	See below
BBA Business: Real Estate and Urban Land Economics	AACSB accreditation review; completed.	Continue programs. Next accreditation review 2016-17.	See below



Program or Program Area	Review Status (Initial / On-Going / Completed / Deferred with Approval / Deferred / Upcoming)	Outcome of Completed Reviews (Continuation / Conditional Continuation / Discontinuation)	One-paragraph Description for Completed Reviews* Or Update on Initial Joint Review Progress
BBA Business: Risk Management and Insurance	AACSB accreditation review; completed.	Continue programs. Next accreditation review 2016-17.	See below
MBA, all majors, all programs	AACSB accreditation review; completed.	Continue programs. Next accreditation review 2016-17.	See below
Master of Accountancy, Business: Accounting	AACSB accreditation review; completed.	Continue programs. Next accreditation review 2016-17.	See below
PhD Business	AACSB accreditation review; completed.	Continue programs. Next accreditation review 2016-17.	See below
Education and Math, MS (School of Education)	Completed.	Discontinued	
Science Education, MS (School of Education)	Completed	Discontinued	
Therapeutic Science, MS (School of Education)	Completed	Discontinued	
PhD Counseling Psychology, APA Accreditation Review	Review initiated in 2011-12; site visit completed; waiting for accreditation review report.		
PhD Educational Psychology, School Psychology Program, (School of Education). APA Accreditation Review	Review initiated in 2011-12; awaiting accreditation review report.		

Program or Program Area	Review Status (Initial / On-Going / Completed / Deferred with Approval / Deferred / Upcoming)	Outcome of Completed Reviews (Continuation / Conditional Continuation / Discontinuation)	One-paragraph Description for Completed Reviews* Or Update on Initial Joint Review Progress
MS Rehabilitation Psychology, Rehabilitation Psychology Program. (School of Education)	Completed. APA accreditation review.	Continue	See below
BS, MS, PhD Rehabilitation Psychology, Rehabilitation Psychology Program. (School of Education)	Completed. Institutional review.	Continue	See below
Chemical Engineering, BS, MS, PhD (Engineering)	Review initiated in 2010-11. Self-study and work of program review committee complete; awaiting dean review.		
Nuclear Engineering, BS. Dept of Engr Physics (Engineering)	Review initiated in 2010-11. Review completed.	Continue	See below
Engineering Mechanics, BS, MS, PhD. Dept of Engr Physics, (Engineering)	Review initiated in 2010-11. Review completed.	Continue	See below
Nuclear Engr & Engineering Physics, MS, PhD. Dept of Engr Physics, (Engineering)	Review initiated in 2010-11. Review completed.	Continue	See below

Program or Program Area	Review Status (Initial / On-Going / Completed / Deferred with Approval / Deferred / Upcoming)	Outcome of Completed Reviews (Continuation / Conditional Continuation / Discontinuation)	One-paragraph Description for Completed Reviews* Or Update on Initial Joint Review Progress
Consumer Science Undergraduate Programs: Consumer Affairs, Personal Finance, Retailing, (School of Human Ecology)	Consumer Affairs completed. Personal Finance and Retailing are expected to be completed Summer 2012.	Admissions suspended to the BS-Consumer Affairs. Report due October 2014.	
Law School, ABA Accreditation Review of JD program.	Initiated 2011-12; site visit expected Spring 2013.		
MS-Cartography and Geographic Information Systems (Dept of Geography review)	Initiated in 2011-12; ongoing.		
Geography programs at Bachelor's, master's, PhD level (Dept of Geography review)	Initiated in 2011-12; ongoing.		
Medical Microbiology and Immunology, BS (L&S and SMPH)	Completed	Discontinued	
Spanish: bachelor's, master's, PhD, review of the Department of Spanish and Portuguese (L&S)	Initiated 2010-11; ongoing; work of review team completed; dean's letter expected summer 2012.		

Program or Program Area	Review Status (Initial / On-Going / Completed / Deferred with Approval / Deferred / Upcoming)	Outcome of Completed Reviews (Continuation / Conditional Continuation / Discontinuation)	One-paragraph Description for Completed Reviews* Or Update on Initial Joint Review Progress
Portuguese: bachelor's, master's, PhD, , review of the Department of Spanish and Portuguese (L&S)	Initiated 2010-11; ongoing; work of review team completed; dean's letter expected summer 2012.		
Zoology: bachelor's, master's, doctoral level programs, review of Department of Zoology. (L&S)	Initiated in 2011-12; ongoing.		
Endocrinology-Reproductive Physiology, PhD (SMPH)	Ongoing; report expected Summer 2012		
Medical Physics, MS, PhD (SMPH) CAMPEP accreditation review.	Completed	Continue	See below
MS/PhD in Neuroscience, SMPH	Initiated 2011-12; ongoing; review committee is being convened.		
Nursing, PhD (School of Nursing)	Completed	Continue	See below
Doctor of Nursing Practice accreditation review (School of Nursing)	Completed	Continue	See below
Doctor of Pharmacy, School of Pharmacy, accreditation review	Completed	Continue	See below

Program or Program Area	Review Status (Initial / On-Going / Completed / Deferred with Approval / Deferred / Upcoming)	Outcome of Completed Reviews (Continuation / Conditional Continuation / Discontinuation)	One-paragraph Description for Completed Reviews* Or Update on Initial Joint Review Progress
Programs Scheduled to Start Institutional Review in 2012-13			
BS-Forest Science, MS/PhD Forestry, BS, MS/PhD Wildlife Ecology (Dept of Forestry and Wildlife Ecology) (CALs)	To be initiated 2012-13.		
PhD Counseling Psychology (School of Education)	Institutional review to follow accreditation review in 2012-13.		
BSE, MS, PhD in Educational Policy Studies (Departmental Review), School of Education	To be initiated 2012-13.		
MS/PhD Environment and Resources, Nelson Institute	To be initiated 2012-13.		
BS/BA International Studies, Letters & Science	To be initiated 2012-13		
Physics Department review, Letters & Science	To be initiated 2012-13		
Cancer Biology, MS, PhD (SMPH)	To be initiated 2011-12; rescheduled to 2012-13		
Molecular and Cellular Pathology, MS, PhD (SMPH)	To be initiated 2011-12; rescheduled to 2012-13		

\*Please provide a brief one-paragraph description indicating how the program is meeting its goals and the outcome of the review. Indicate any areas in need of attention, as well as areas of unusual strength.

## REVIEW SUMMARIES

Doctor of Audiology (Joint Review) – The review committee concluded that the program has met the goals established at implementation, including a strong partnership between the two institutions. Ongoing and systematic assessments are conducted of academic and clinical education and findings are used as a basis for program improvement. Students excel on the national certification exam and 49 of 50 graduates have jobs in the field of audiology.

Business programs, BBA, MBA, and PhD - AACSB accreditation was confirmed and the next AACSB review is scheduled for 2016-17. Strengths include high levels of student satisfaction, opportunities for applied learning, focus of undergraduate program on data analytics, strong career services, breadth of specializations, and strong connections to industry. Opportunities for improvement include improved documentation of assessment of student learning and more research support for PhD students.

Department of Engineering Physics – This department review encompassed the BS in Engineering Physics, the BS in Nuclear Engineering, the MS/PhD in Nuclear Engineering and Engineering Physics, and the BS/MS/PhD in Engineering Mechanics. Primarily the review recognized the quality of the faculty, and the research and instructional programs. The review of the undergraduate programs is complemented by the ABET accreditation process and materials. As an outcome of the review, the College of Engineering will examine interdisciplinary teaching of large service courses such as statics, devise a response to the student interest in more astronautics classes, and improve access to facilities for individuals with physical disabilities. At the graduate level, the Graduate School review encouraged the department to sustain efforts to increase gender and race/ethnic diversity in the department.

MA- Gender and Women's Studies (Joint Review) – The joint review committee concluded that the goals of the program are being met. It is an intellectually rigorous graduate program that embraces a multi-disciplinary perspective.

PhD-Mass Communications – This program is shared by the School of Journalism and Mass Communications (Letters & Science) and the Department of Life Sciences Communication (CALs). The review was initiated in 2009 and completed in spring 2012. It is recognized nationally as a high-quality program that attracts strong students and faculty with international reputations. A number of recommendations were made to assure that the two departments work more effectively to coordinate the program as a single graduate program. To assist them, an ad hoc oversight committee will be established under the aegis of the Graduate School and with support of the deans of Letters & Science and CALs to work on both short-term and long-term goals.

MS/PhD Medical Physics – The CAMPEP accreditation was completed and accreditation was awarded until 2016. This is a strong program with a large, internationally recognized faculty. Several new courses have been added and they will broaden the educational offerings. The program is seeking to establish a residency program as a way to remedy a shortage of such positions.

Doctor of Nursing Practice – The initial CCNE accreditation review of the new DNP concluded that the program met all standards and there were no compliance concerns. The program was awarded full accreditation. The report lauded the quality of students, their professional commitment, and their enthusiasm for nursing.

PhD Nursing – The School of Nursing and the Graduate School collaborated on this review. In the context of a high-quality program a number of recommendations were made by the review committee and accepted by the School of Nursing. Recommendations include, appoint a faculty director, standardize faculty execution of program guidelines and policies, devise a more comprehensive recruitment plan and more formalized admissions, and explore synergies between the PhD and the DNP.

MS-Occupational Therapy (Joint Review) – The joint review committee concluded that the program has more than met program goals and recommended continuation. The MS-OT is accredited by ACOTE and all of the MS-OT students have passed national board certification and are employed. The learning objectives are well defined and there is abundant assessment evidence to demonstrate program quality. Admission is competitive and the program has attracted both strong students and strong faculty.

Doctor of Pharmacy – The Doctor of Pharmacy accreditation review was completed and the program met all accreditation standards. The program was accredited through 2020.

BS/MS/PhD Plant Pathology – The review lauded the quality of the Plant Pathology department faculty, research programs, and educational programs. The review highlighted the need for a faculty member with expertise in mycology, a gap that is to be remedied with a shared hire with Botany. The graduate program is recognized as one of the most highly regarded in the nation and is the alma mater for numerous scientists and leaders in academia, government and industry. The graduate program is dynamic and regularly modified to adjust for perceived shortcomings and to align with contemporary intellectual trends. The undergraduate program has a modest enrollment and the future of the program is under discussion.

MS-Rehabilitation Psychology – The CORE accreditation review of the Rehabilitation Counselor Education Program was completed and the program was reaccredited. The report noted that the program is strong in standards for direct consumer contact in the practicum. There is a strong fieldwork evaluation process, field supervisors find students to be well prepared, and students are satisfied with placements. Facilities are “state of the art” and accessible to students with disabilities. Faculty are well-qualified and dean support is strong. Going forward, the program evaluation needs to include more information related to recruitment and student retention with respect to diversity and program recognition.

BSE, MS and PhD-Rehabilitation Psychology – An institutional departmental review of Rehabilitation Psychology concluded that the undergraduate program does an excellent job preparing students for careers and graduate study, in part due to a strong internship program. Admission to the RP programs at all levels is competitive and the program attracts strong students. Students are evaluated at regularly scheduled meetings to assure that students are meeting program goals. Indirect assessments include surveys of students and alumni. One question raised is whether five faculty were sufficient to sustain the RP programs. One recommendation was to examine ways to attract a more diverse pool of students to the program.